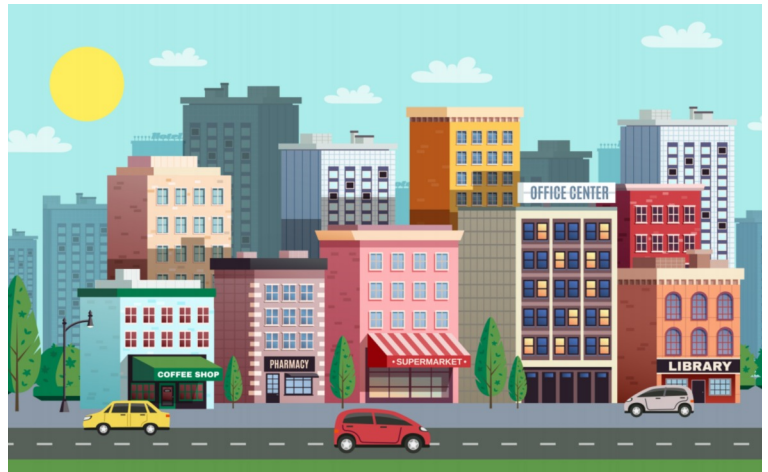


## Word List

can	near
clean	things
don't	usually
like	what's
live	when



## Audio Track 3

## Discussion Questions

Fill in the question blanks with choices from the word list. Then, listen to the online audio track. Write the answers you hear next to the questions. Try to include as much information as possible. Question translations are on p. 118.

1. Do you live ( ) the university?
2. What do you ( ) do on your **commute**<sup>1</sup> to school?
3. ( ) your **neighborhood**<sup>2</sup> like?
4. ( ) you tell me about your **neighbors**<sup>3</sup>?
5. Do you ever help ( ) up the neighborhood?
6. What are some fun ( ) to do in your hometown?
7. What's something you ( ) like about your neighborhood?
8. ( ) you were a small **child**<sup>\*</sup>, did you play in any local parks?
9. Where would you ( ) to live in the future?
10. Would you like to ( ) in a **mansion**<sup>4</sup> someday?

Pronunciation: [child](#)

## Vocabulary Unit 3 *Practice with a partner.*

- |                            |                              |                              |
|----------------------------|------------------------------|------------------------------|
| 1. commute = 通学、通勤         | 12. hang out = 遊ぶ            | 22. chandelier = シャンデリア      |
| 2. neighborhood = 近所       | 13. hot and humid = 蒸し暑い     | 23. and stuff = など           |
| 3. neighbors = 近所の人        | 14. cicada = 蝉               | 24. butler = 執事              |
| 4. mansion = 豪邸            | 15. annoying =<br>うるさい、やかましい | <b>Extra Vocabulary</b>      |
| 5. urban = 都会の             | 16. really loud = 本当にうるさい    | 25. two-story house = 二階建ての家 |
| 6. indoors = 屋内で           | 17. swing = ブランコ             | 26. apartment = アパート         |
| 7. waste of money = お金の無駄  | 18. jungle gym = ジャングルジム     | 27. condominium = 分譲マンション    |
| 8. getting into = はまっている   | 19. tag = 鬼ごっこ               | 28. dormitory = 寮            |
| 9. residential = 住宅の       | 20. hide-and-seek = かくれんぼ    | 29. rural = 田舎の              |
| 10. boring = つまらない         | 21. hear = だそうだ              | 30. suburb = 郊外              |
| 11. used to =<br>以前は～したものだ |                              |                              |

## Discussion Question Responses

*Below are possible responses to the questions. Fill in the missing letters. Then, check with a partner. There may be various responses. Next, check with your teacher. Finally, read the questions and responses with your partner.*

1. Yeah, I live very close. It's just a 15-minute w\_ \_ \_.
2. I usually r\_ \_ \_ a book or listen to music.
3. I live in a very **urban**<sup>5</sup> area. There are a lot of b\_ \_ \_ \_ \_ and people.
4. Honestly, I don't k\_ \_ \_ my neighbors very well.
5. Not recently, but when I was a c\_ \_ \_ , I often helped clean up.
6. Well, there are a lot of r\_ \_ \_ \_ \_ and shops that you could go to.
7. It's a little n\_ \_ \_ . A lot of big trucks pass in front of my place.
8. Not really. When I was little, I usually p\_ \_ \_ \_ with my friends **indoors**<sup>6</sup>.
9. I think I'd like to live in the c\_ \_ \_ \_ \_ someday, maybe in Hokkaido.
10. I don't think so. A mansion is t\_ \_ big and it seems to be a **waste of money**<sup>7</sup>.

# Tapescript: Your Neighborhood



## Audio Track 3

**William:** Good morning, Yuna.

**Yuna:** Good morning, William.  
What's up?

**W:** Nothing much. What's up with you?

**Y:** Nothing really. I'm just getting ready for today's class.

**W:** Today we'll talk about our neighborhoods. Are you ready?

**Y:** Sure!

**W: (1) Do you live near the university?**

**Y:** Um\*, not so close... about 45 minutes from here, in Ando.

**W:** Ando? Where's that?

**Y:** It's in Nara Prefecture. It's a small town.

**W:** Uh-huh\*. So, you take the train to school?

**Y:** Yeah, that's right.

**W: (2) What do you usually do on your commute to school?**

**Y:** I usually just listen to music.

**W:** Oh, yeah? Who do you like?

**Y:** Well, recently I've been getting into<sup>8</sup> some classic rock, like The Rolling Stones and The Beatles.

**W:** That's cool.

**W: (3) What's your neighborhood like?**

**Y:** It's mostly a residential<sup>9</sup> area. There are also a lot of farms and rivers.

**W:** Sounds very peaceful and quiet.

**Y:** Yeah, it's nice, but it can be a little boring<sup>10</sup>.

**W: (4) Can you tell me about your neighbors?**

**Y:** Sure. My neighbors are pretty friendly. We always chat when we see each other. When I was little, I used to<sup>11</sup> play with their dog and we'd go on walks together.

**W:** That sounds nice. Um, you don't go on walks anymore?

**Y:** No. I guess I'm kind of busy these days.

**W:** Uh-huh.

**W: (5) Do you ever help clean up the neighborhood?**

**Y:** Me? Not so much. I think my mom and dad help out with the community cleaning.

**W:** I see. How often do they do that?

**Y:** Hmm\*, maybe two or three times a year. I'm not sure.

**W: (6) What are some fun things to do in your hometown?**

**Y:** Uh, nothing really. It's kind of boring. So, I usually hang out<sup>12</sup> in Osaka with my friends.

**W:** What do you do in Osaka?

**Y:** Um, usually just go to a restaurant or go shopping. Sometimes we'll go to a movie.

**W:** Uh-huh. Sounds good.

**W: (7) What's something you don't like about your neighborhood?**

**Y:** In the summer, it's really hot and humid<sup>13</sup>. The cicadas<sup>14</sup> are really annoying<sup>15</sup>, too.

**W:** Yeah, they can be really loud<sup>16</sup> sometimes.

**W: (8) When you were a small child, did you play in any local parks?**

**Y:** Sure. There was a park near my house with swings<sup>17</sup> and a jungle gym<sup>18</sup>.

**W:** Did you go there with your friends or with your family?

**Y:** Usually with my friends. We played tag<sup>19</sup> and hide-and-peek<sup>20</sup> a lot.

**W: (9) Where would you like to live in the future?**

**Y:** Hawaii would be nice!

**W:** Yeah, I'd love to live there too!

**Y:** I'd need a good job, though. I hear<sup>21</sup> it's very expensive.

**W:** Yeah, it must cost a lot to live there.

**W: (10) Would you like to live in a mansion someday?**

**Y:** Like a real mansion, with chandeliers<sup>22</sup> and stuff<sup>23</sup>?

**W:** Yeah, like a super rich house.

**Y:** Sure! Why not? If I became super rich, I'd buy a mansion in Hawaii.

**W:** Could I come and live with you?

**Y:** Of course! You could live there as the butler<sup>24</sup>! (ha ha)

**W:** (ha ha) What?

Pronunciation:

Um, Uh-huh, Hmm

## What's Wrong?

Work with a partner to write or choose the correct sentences.

- X** My apartment is too narrow. I want to get a bigger place.

**O** My apartment is too . I want to get a bigger place.
- X** My house is near from the station.

**O** My house is the station.
- X** What's your neighbor like?

**O** He likes fishing. / He's very friendly. / He lives next to me. (choose one)



## Discussion

Work with a partner. Use the discussion questions as conversation starters. Avoid one-word answers. Give long responses. Make comments, have reactions, and ask follow-up questions. Take notes of your partner's answers below. Your goal is to speak for ten minutes or more.

### Partner's Name:

	Answers	Extra
1.	/	
2.	/	
3.	/	
4.	/	
5.	/	
6.	/	
7.	/	
8.	/	
9.	/	
10.	/	

## The Question Game

Make a list of five things that are found in towns and cities. Example: park. Keep the list a secret.

**Work in groups of three to five people and take turns asking questions like:**

- Is it a kind of building?
- Is it a kind of business?
- Is it a government place?
- Is it in the city? (countryside)
- Why do people go there?

Please think of your own original questions as well.

### Useful Language:

- Both.
- That's right!
- Close!
- How about a hint?
- Oh, we give up!

### My List

- 
- 
- 
- 
- 



### Communication Crosswords

Student A p. 97  
Student B p. 107

